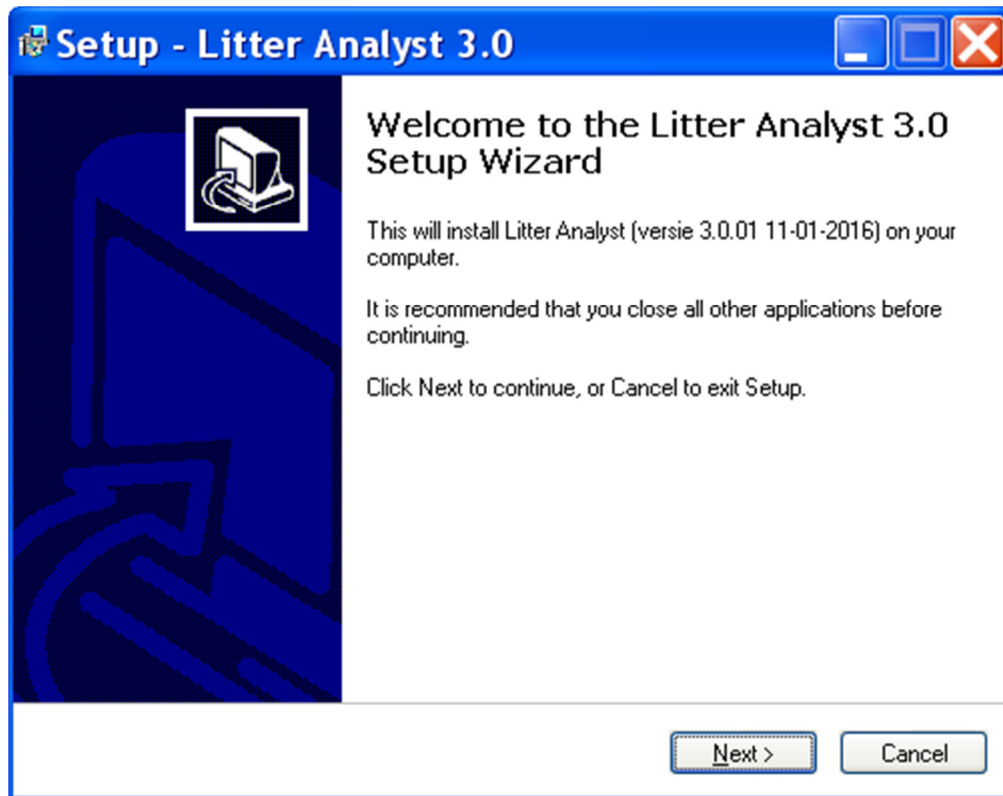


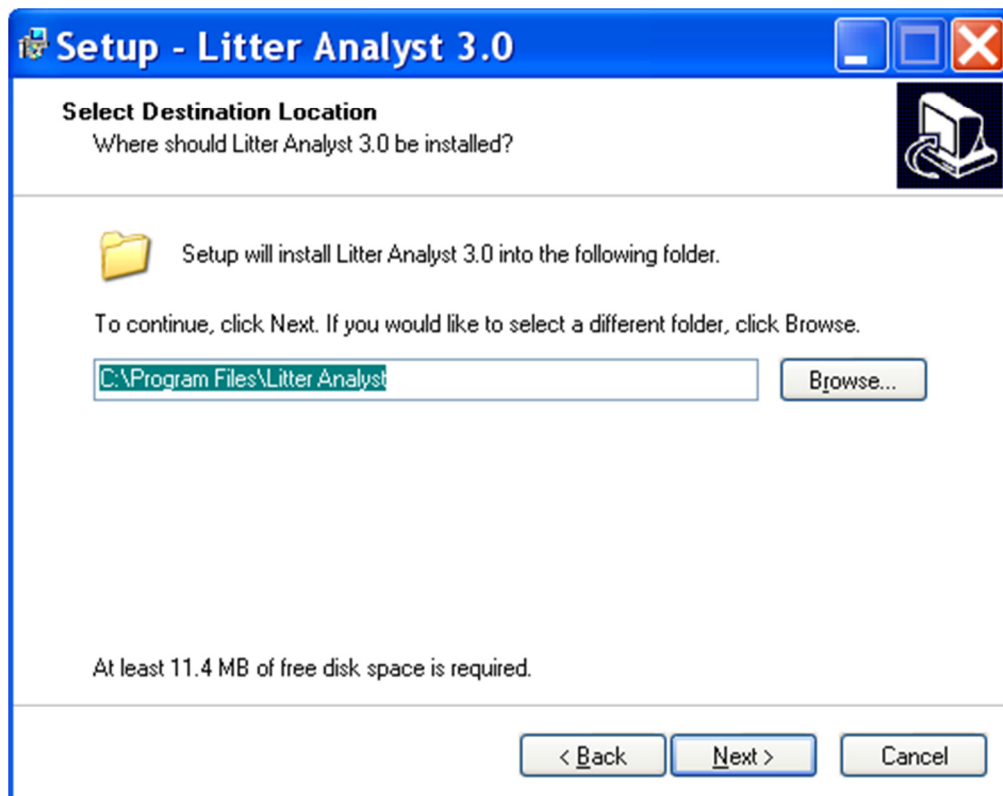
## Installation manual Litter Analyst

On the download page of Litter Analyst (see <http://www.amo-nl.com>) we provide two installers setup.exe and update.exe and we give instruction for running these installers. The installers are developed with the application innosetup.

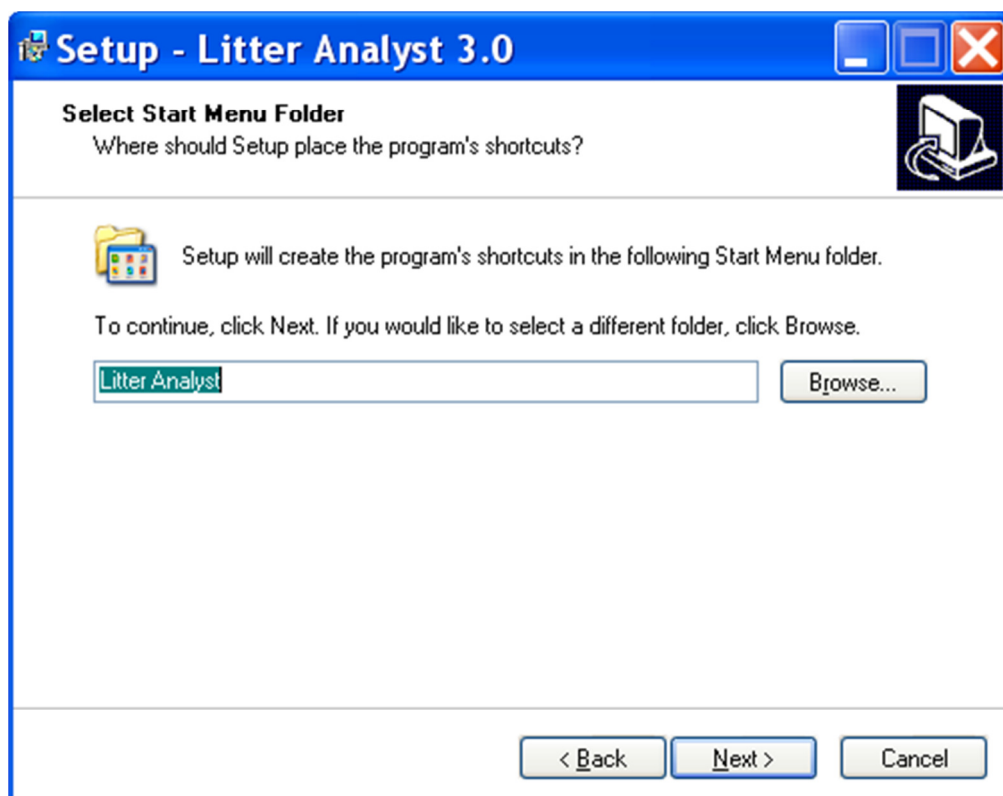
Run the installer setup.exe (or update.exe) and the following dialog window appears:



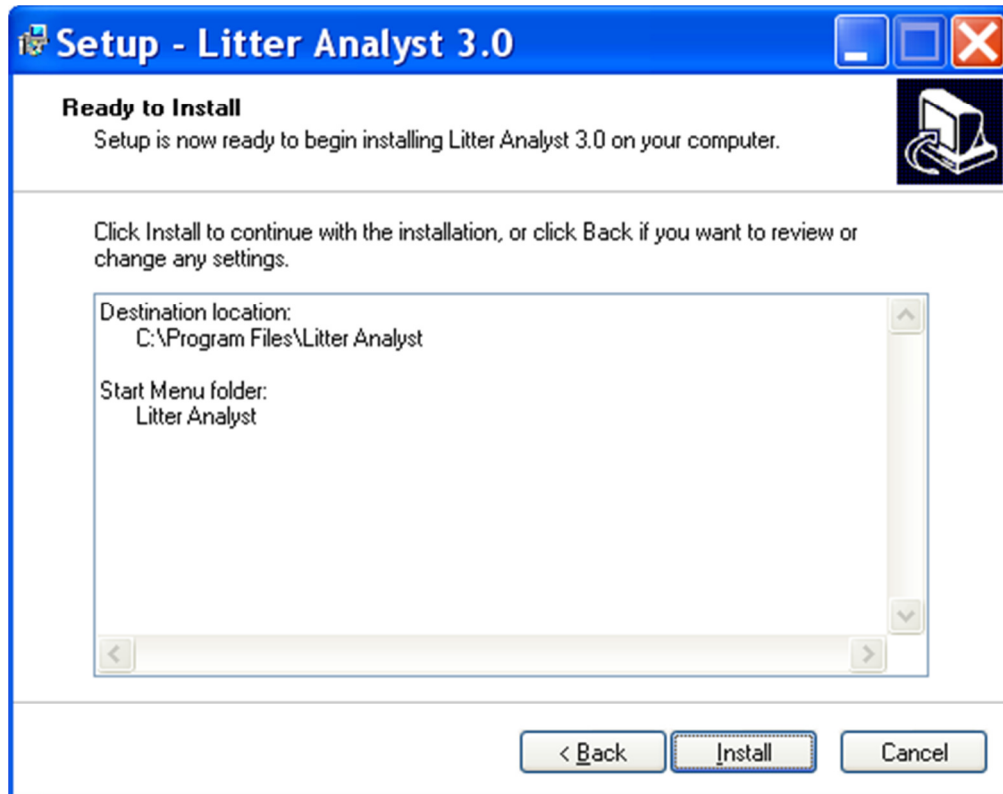
Choose 'Cancel' if you want to stop the installation of Litter Analyst. If you choose 'Next' the following dialog window appears:



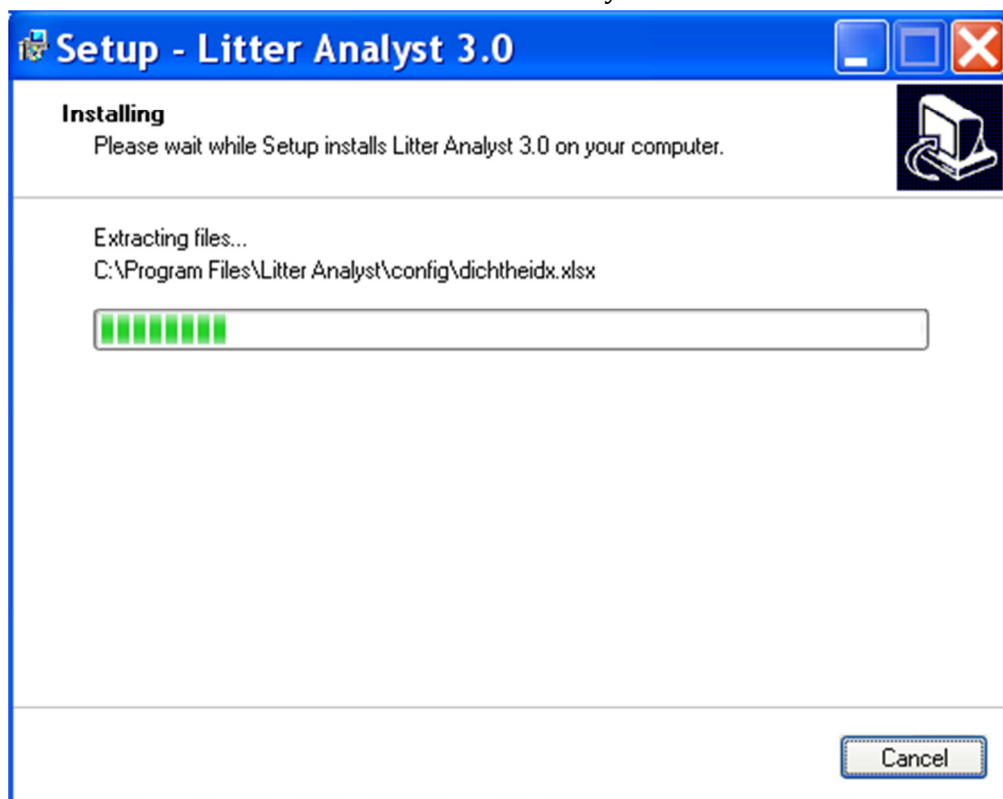
Choose the directory for Litter Analyst. Is there enough free space available on your computer system? Choose 'Next' to go on with the installation. The following dialog window appears:

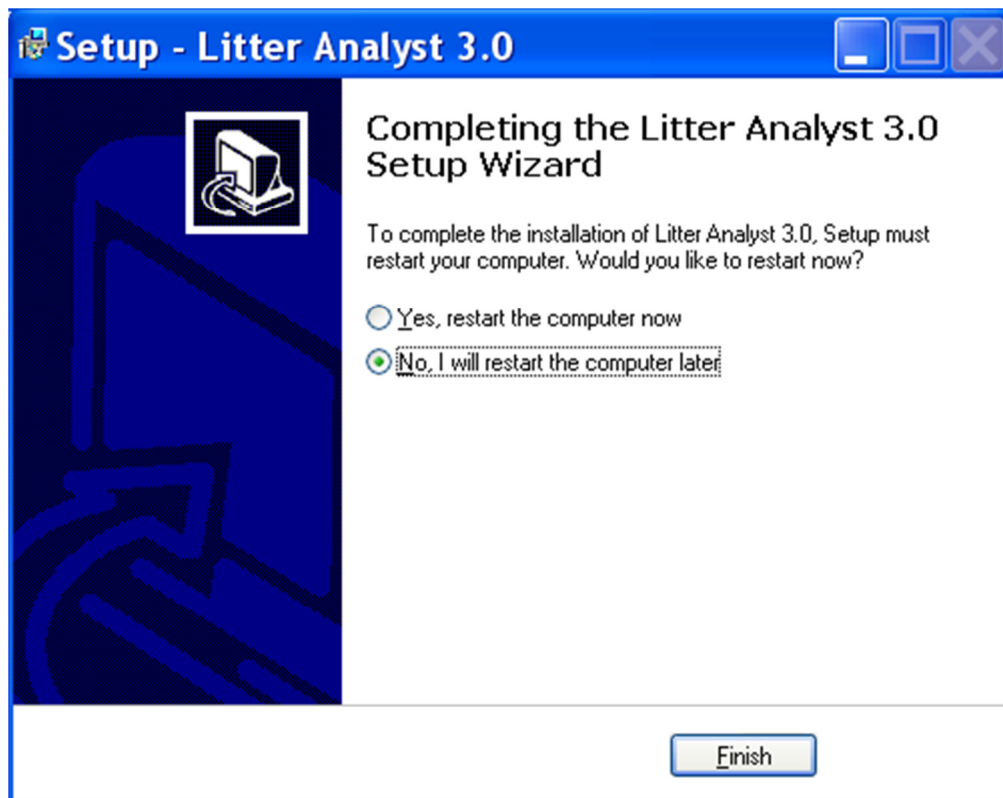


Select menu Start Menu Folder. Choose 'Next' to see the following dialog window:



Choose Install and the installation of Litter Analyst will start.





You can choose to restart the computer. 'Finish' and you can launch Litter Analyst. After the installation of Litter Analyst with the installer setup.exe run the installer update.exe to get the newest version. The installation with update.exe is identically to the installation of setup.exe except that the installation is much quicker.

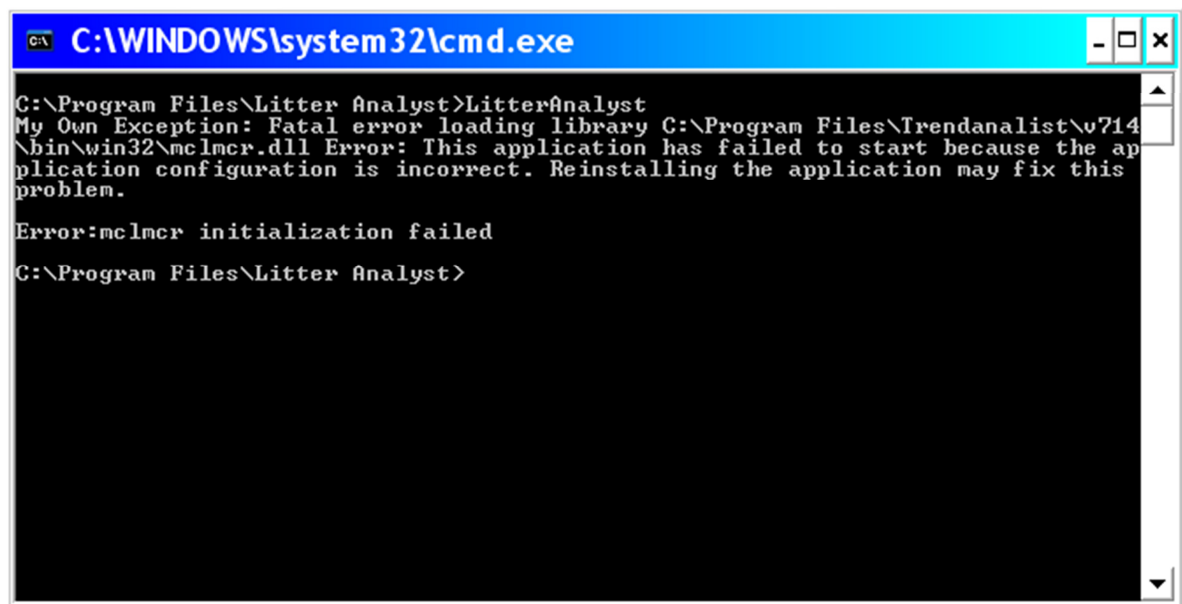
## Options Litter Analyst

Options of Litter Analyst of the user (see Options) are saved in the file LitterAnalyst.ini.bin. The directory of LitterAnalyst.ini.bin is specified by:

- 1) The environment variable 'Litter Analyst' and if the value is an existing directory. This is a possibility by virtualization of Litter Analyst to keep the options of Litter Analyst. An administrator can define this environment variable.
- 2) Or by the environment variable 'userprofile'.

## Handling errors

If a DOS-window appears and vanishes immediately then there must be a fatal error. Use the cmd-command and change the directory ('cd ..') to \*\Litter Analyst and run LitterAnalyst.exe to view the error.



A common error especially for old windows systems is the fatal error shown in the figure above. The solution is to reinstall the 'Microsoft Visual C++ 2005 Redistributable Package'. For the installation of this package go to \*\Litter Analyst\v74\bin\win32\ and run vccredit\_x86.exe.

In the installer file setup.exe the MCR is included. If Litter Analyst still fails to start after the installation then try to run MCRinstaller.exe and then the installer file update.exe. This is an alternative way to install Litter Analyst.

We also provide a zip file (litterA.zip) in the case the downloading of the installer files setup.exe and update.exe is not permitted.

Contact us if you have any question about the installation of Litter Analyst (see <http://www.amo-nl.com/wordpress/amo/contact> ).